



FLOOR SPRINGS



*Here
you can find
all kinds of floor springs,...*



*SlimBody *ThinBody *300KGsHeavyDuty *80KGsLightDuty
*BackCheck *CAM-action Effect *InterchangableSpindleInsert



Models & Specification Chart

● standard ○ available on request — not available

Series	Reference Power Size	Max. Door Weight	Hold-open 90°	Max. Open Angel	Back - Check	Exchange -able Spindles	Body Size (L x W x H)	Body features
FS-R1000	3,4,5,6	250 kg	●	113°	—	—	320 x 94 x 51	
FS-R2000	3,4,5	200 kg	●	113°	—	—	280 x 132 x 48	
FS-R2200	3,4,5	200 kg	●	113°	—	—	284 x 130 x 55	
FS-R5000	5,6,7	300 kg	●	113°	—	—	298 x 146 x 47	Heavy
FS-C9100	2	80 kg	●	130°	—	—	274 x 97 x 40	Small
FS-C9200	2,3,4	150 kg	●	130°	—	●	296 x 98 x 48	
FS-T9200	2,3,4,6	250 kg	○	180°	○	○	296 x 98 x 48	
FS-C9300	2,3	100 kg	●	130°	—	○	307 x 108 x 40	Thin
FS-T9300	2,3,4,6	250 kg	○	130°	○	○	307 x 108 x 40	Thin
FS-S9300	2,3	100 kg	●	130°	—	○	307 x 108 x 40	Thin
FS-H9300	2,3,4,5	180 kg	○	130°	●	○	307 x 108 x 40	Thin
FS-C9400	2,3	100 kg	●	130°	—	—	297 x 145 x 48	
FS-T9400	2,3,4	150 kg	○	130°	—	—	297 x 145 x 48	
FS-C9500	2_7	300 kg	●	180°	—	●	341 x 78 x 60	Heavy/ Slim
FS-H9500	2,4,5,7	300 kg	●	180°	●	●	341 x 78 x 60	Heavy/ Slim
FS-C9800	2,3	100 kg	●	110°	—	—	283 x 132 x 48	
FS-T0006	—	250 kg	—	180°	—	—	89 x 51 x 4	Mini

WARRANTY:

FS-RXXXX series: 5-YEAR, 500,000/1,000,000 CYCLES

FS-TXXXX series: 5-YEAR or 500,000 CYCLES

FS-CXXXX series: 5-YEAR or 500,000 CYCLES

FS-GXXXX series: 1-YEAR or 300,000 CYCLES

FS-HXXXX series: 500,000 CYCLES



FLOOR SPRING



FEATURES

The **FS-R1000** series,
Suitable for the heavy door weight up to **250KGs**.

- PREMIUM QUALITY:** 100% Made in Taiwan with reliable quality. 5-YEAR warranty and LIFETIME after sales service.
- ADJUSTMENT IN ALL DIRECTION:** Solve floor level problems without taking down the door.
- UNIVERSAL:** For right, left or double action doors.
- ALL SEASON FLUID:** Provide constant closing speed under a wide variety of temperatures.
- CLOSING SPEED:** Controlled by two easily adjustable independent non-critical valves. Ensure the proper closing and latching.
- POWER FORCE:** Different power models are available, suitable for different doors weight.
- MECHANICAL HOLD-OPEN:** 90° (special angle or non-hold models are available on request.)
- BODY DIMENSION:** 320 x 94 x 51mm
- Forbid selling to Japan & Korea.



Series / Art. Number	Reference Power Size	Max. Door Weight (kgs)	Hold -open	Max. Open Angel	Back Check	Exchangeable Spindles	Off-set Arm
FS-R1003	3	105	●	113	—	—	○
FS-R1004	4	150	●	113	—	—	○
FS-R1005	5	200	●	113	—	—	○
FS-R1006	6	250	●	113	—	—	○

Marks: ● standard ○ available on request — not available



FLOOR SPRING



FEATURES

The **FS-R2000** series,
Suitable for heavy **TRAFFIC** doors,

- PREMIUM QUALITY:** 100% Made in Taiwan with reliable quality. 1,000,000-CYCLE tested and 5-YEAR warranty.
- ADJUSTMENT IN ALL DIRECTION:** Solve floor level problems without taking down the door.
- UNIVERSAL:** For right, left or double action doors.
- ALL SEASON FLUID:** Provide constant closing speed under a wide variety of temperatures.
- CLOSING SPEED:** Controlled by two easily adjustable independent non-critical valves. Ensure the proper closing and latching.
- POWER FORCE:** Different power models are available, suitable for different doors weight.
- MECHANICAL HOLD-OPEN:** 90° (special angle or non-hold models are available on request.)
- BODY DIMENSION:** 280 x 132 x 48mm
- Forbid selling to Japan and Philippines.

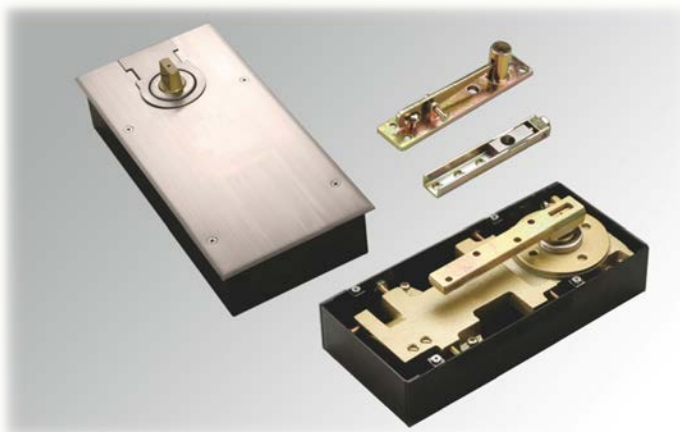


Series / Art. Number	Reference Power Size	Max. Door Weight (kgs)	Hold -open	Max. Open Angel	Back Check	Exchangeable Spindles	Off-set Arm
FS-R2003	3	105	●	113	—	—	○
FS-R2004	4	150	●	113	—	—	○
FS-R2005	5	200	●	113	—	—	○

Marks: ● standard ○ available on request — not available



FLOOR SPRING



FEATURES

The **FS-R2200** series,
Suitable for heavy **TRAFFIC** doors,

- PREMIUM QUALITY:** 100% Made in Taiwan with reliable quality. 1,000,000-CYCLE tested and 5-YEAR warranty.
- MAXIMUM DOOR WEIGHT:** Up to 200Kgs.
- UNIVERSAL:** For right, left or double action doors.
- ALL SEASON FLUID:** Provide constant closing speed under a wide variety of temperatures.
- CLOSING SPEED:** Controlled by two easily adjustable independent non-critical valves. Ensure the proper closing and latching.
- POWER FORCE:** Different power models are available, suitable for different doors weight.
- MECHANICAL HOLD-OPEN:** 90° (special angle or non-hold models are available on request.)
- BODY DIMENSION:** 284 x 130 x 55mm
- Forbid selling to Japan and Philippines.



Series / Art. Number	Reference Power Size	Max. Door Weight (kgs)	Hold -open	Max. Open Angel	Back Check	Exchangeable Spindles	Off-set Arm
FS-R2203	3	105	●	113	—	—	○
FS-R2204	4	150	●	113	—	—	○
FS-R2205	5	200	●	113	—	—	○

Marks: ● standard ○ available on request — not available



FLOOR SPRING



FEATURES

The **FS-R5000** series,
Suitable for **LARGE** and very **HEAVY** door weighing up to **300 KGs**.

- PREMIUM QUALITY:** 100% Made in Taiwan with reliable quality. 1,000,000-CYCLE tested and 5-YEAR warranty.
- MAXIMUM DOOR WEIGHT:** Up to 300Kgs.
- UNIVERSAL:** For right, left or double action doors.
- ALL SEASON FLUID:** Provide constant closing speed under a wide variety of temperatures.
- CLOSING SPEED:** Controlled by two easily adjustable independent non-critical valves. Ensure the proper closing and latching.
- POWER FORCE:** Different power models are available, suitable for different doors weight.
- MECHANICAL HOLD-OPEN:** 90° (special angle or non-hold models are available on request.)
- BODY DIMENSION:** 298 x 146 x 47mm
- Forbid selling to Japan.

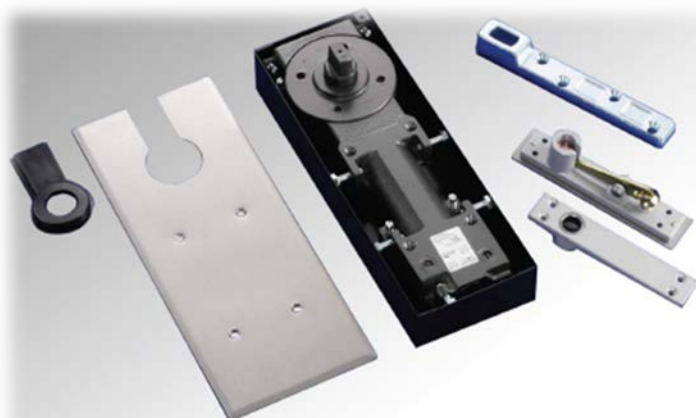


Series / Art. Number	Reference Power Size	Max. Door Weight (kgs)	Hold -open	Max. Open Angel	Back Check	Exchangeable Spindles	Off-set Arm
FS-R5005	5	200	●	113	—	—	○
FS-R5006	6	250	●	113	—	—	—
FS-R5007	7	300	●	113	—	—	—

Marks: ● standard ○ available on request — not available



FLOOR SPRING



FEATURES

The **FS-C9100** series,

The **SMALL** design of thin and short body with **LIGHT** power,
the best choice for light weight doors and limited space installation.

CAM-ACTION tech offers easy opening, but still strong enough to close door.

1. **PREMIUM QUALITY:** 100% Made in Taiwan with reliable quality and service.
2. **CAM ACTION TECH:** High mechanic efficiency, provides easy and light opening.
3. **UNIVERSAL:** For right, left or double action doors.
4. **ALL SEASON FLUID:** Provide constant closing speed under a wide variety of temperatures.
5. **CLOSING SPEED:** Controlled by two easily adjustable independent non-critical valves.
Ensure the proper closing and latching.
6. **POWER FORCE:** Light duty power force is designed for light weight door.
7. **MECHANICAL HOLD-OPEN:** 90° (special angle or non-hold models are available on request.)
8. **BODY DIMENSION:** 274 x 97 x 40mm

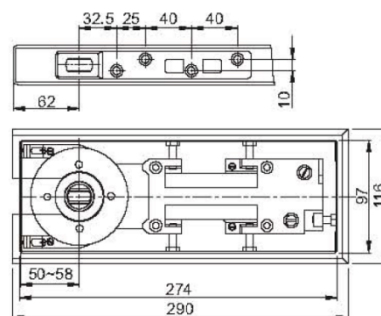
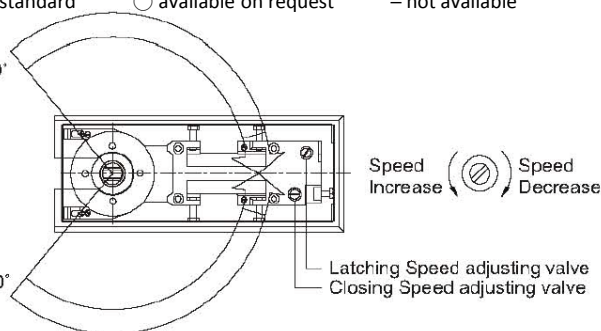


Series / Art. Number	Reference Power Size	Max. Door Weight (kgs)	Hold -open	Max. Open Angel	Back Check	Exchangeable Spindles	Off-set Arm
FS-C9102	2	80	●	130	—	—	○

Marks: ● standard ○ available on request — not available

Max. Opening 130°

Max. Opening 130°





FLOOR SPRING



FEATURES

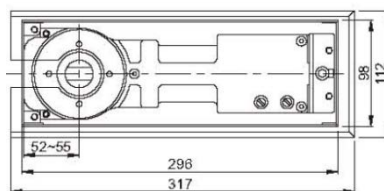
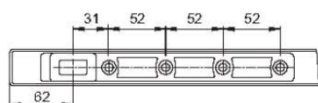
The **FS-C9200** and **T9200** series,
CAM-ACTION tech (C/series) offers easy opening, but still strong enough to close door.
INTERCHANGEABLE SPINDLE INSERT (T/series) available to suit site conditions.

- PREMIUM QUALITY:** 100% Made in Taiwan with reliable quality and service.
- CAM ACTION TECH:** High mechanic efficiency, provides easy and light opening. (C/series)
- UNIVERSAL:** For right, left or double action doors.
- ALL SEASON FLUID:** Provide constant closing speed under a wide variety of temperatures.
- BACK-CHECK EFFECT:** Available per model select.
- CLOSING SPEED:** Controlled by two easily adjustable independent non-critical valves
- POWER FORCE:** Different power models are available, the max. door weight is up to 250kg. (T/series)
- MECHANICAL HOLD-OPEN:** 90° (special angle or non-hold models are available on request.)
- BODY DIMENSION:** 296 x 98 x 48mm.



Series / Art. Number	Reference Power Size	Max. Door Weight (kgs)	Hold -open	Max. Open Angel		Back Check		Exchangeable Spindles		Off-set Arm	
				C	T	C	T	C	T	C	T
FS-9202	2	70	●	130	180	—	○	●	○	○	○
FS-9203	3	100	●	130	180	—	○	●	○	○	○
FS-9204	4	150	●	130	180	—	○	●	○	○	○
FS-9206	6	250	●	—	180	—	○	—	○	—	○

Marks: ● standard ○ available on request — not available





FLOOR SPRING



FEATURES

The **FS-C9300, T9300, S9300** and **H9300** series,

40mm **Ultra THIN** body, suitable where the floor depth is limited.

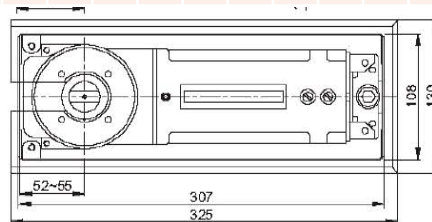
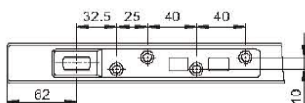
FS-C9300 and T9300 is with **CAM-ACTION** tech (C/series) offers easy opening, but still strong enough to close door.

- PREMIUM QUALITY:** 100% Made in Taiwan with reliable quality and service. (BTS-84 series compatible)
- CAM ACTION TECH:** High mechanic efficiency, provides easy and light opening.
- UNIVERSAL:** For right, left or double action doors.
- ALL SEASON FLUID:** Provide constant closing speed under a wide variety of temperatures.
- CLOSING SPEED:** Controlled by two easily adjustable independent non-critical valves.
- POWER FORCE:** Different power models are available, suitable for different doors weight.
- MECHANICAL HOLD-OPEN:** 90° (special angle or non-hold models are available on request.)
- BODY DIMENSION:** 307 x 108 x 40mm
- HEAVY DUTY:** up to 250kgs, only available for T/series (FS-T9306).



Series / Art. Number	Reference Power Size	Max. Door Weight (kgs)	Hold -open	Max. Open Angel				Back Check				Exchangeable Spindles				Off-set Arm			
				C	T	S	H	C	T	S	H	C	T	S	H	C	T	S	H
FS-9302	2	70	●	130	130	130	130	—	○	—	●	○	○	○	○	○	○	○	○
FS-9303	3	100	●	130	130	130	130	—	○	—	●	○	○	○	○	○	○	○	○
FS-9304	4	H: 130, T: 150	●	—	130	—	130	—	○	—	●	—	○	—	○	—	○	—	○
FS-9305	5	H only: 180	●	—	—	—	130	—	—	—	●	—	—	—	○	—	—	—	○
FS-9306	6	T only: 250	●	—	130	—	—	—	○	—	—	—	○	—	—	—	○	—	—

Marks: ● standard ○ available on request — not available





FLOOR SPRING



FEATURES

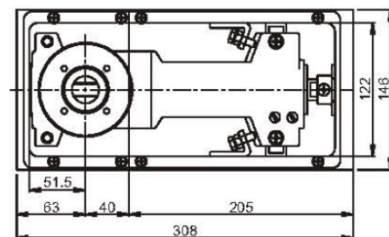
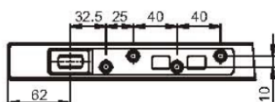
The **FS-C9400** and **T9400** series, the most popular Japanese grade floor spring.
CAM-ACTION tech (C/series) offers light opening, but still strong enough to close door.

- PREMIUM QUALITY:** 100% Made in Taiwan with reliable quality and service. (N-200 series compatible)
- CAM ACTION TECH:** High mechanic efficiency, provides easy and light opening, available with C/series.
- UNIVERSAL:** For right, left or double action doors.
- ALL SEASON FLUID:** Provide constant closing speed under a wide variety of temperatures.
- CLOSING SPEED:** Controlled by two easily adjustable independent non-critical valves
- POWER FORCE:** Different power models are available, suitable for different doors weight.
- MECHANICAL HOLD-OPEN:** 90° (special angle or non-hold models are available on request.)
- BODY DIMENSION:** 297 x 145 x 48mm
- CYCLE TEST & WARRANTY:** G/series is 300,000-CYCLE TESTED and 1-YEAR warranty.



Series / Art. Number	Reference Power Size	Max. Door Weight (kgs)	Hold - open	Max. Open Angel		Back Check	Exchangeable Spindles	Off-set Arm	CAM Action	
				<u>C</u>	<u>T</u>				<u>C</u>	<u>T</u>
FS-9402	2	70	●	130	130	—	—	○	○	—
FS-9403	3	100	●	130	130	—	—	○	○	—
FS-9404	4	150	●	—	130	—	—	○	○	—

Marks: ● standard ○ available on request — not available





FLOOR SPRING



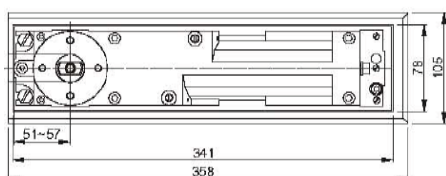
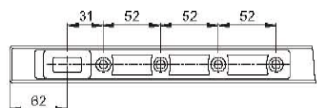
FEATURES

The **FS-C9500** and **H9500 SLIM** series, 60mm most narrow body, full **180°** opening angle **POWER ADJUSTABLE**, suitable for heavy door weight up to **300 KGs**, **INTERCHANGEABLE SPINDLE INSERT** available to suit site conditions. **FS-C9500** is with **CAM-ACTION** tech, offer easy opening, but still strong enough to close door.

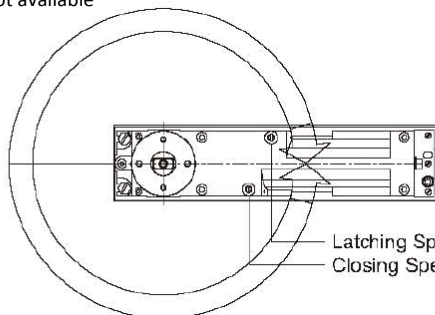
- PREMIUM QUALITY:** 100% Made in Taiwan with reliable quality and service. (BTS-80 series compatible).
- CAM ACTION TECH:** High mechanic efficiency, provides easy and light opening.
- POWER ADJUSTABLE:** From 20 N. to 60 N., a real personalization opening and closing forces.
- ALL SEASON FLUID:** Provide constant closing speed under a wide variety of temperatures.
- CLOSING SPEED:** Controlled by two easily adjustable independent non-critical valves. Ensure the proper closing and latching.
- INTERCHANGEABLE SPINDLE:** Variety length spindles are available for selection.
- MECHANICAL HOLD-OPEN:** 90° (special angle or non-hold models are available on request.)
- BODY DIMENSION:** 341 x 78 x 60mm

Series / Art. Number	Reference Power Size	Max. Door Weight (kgs)	Hold -open	Max. Open Angel	Back Check	Exchangeable Spindles	Off-set Arm
FS-C9527	2_7	300	●	180	—	●	○
FS-H950X	2,4,5,7	Up to 300	●	180	●	●	○

Marks: ● standard ○ available on request — not available



Max. Opening 180°



Speed Increase (⊙) Speed Decrease (⊗)

Latching Speed adjusting valve
Closing Speed adjusting valve



FLOOR SPRING



FEATURES

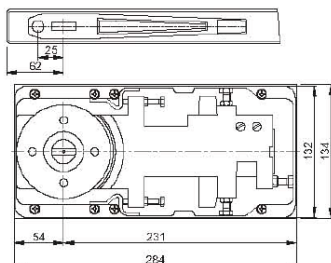
The **FS-C9800** series,
CAM-ACTION tech offers easy opening, but still strong enough to close door.

- PREMIUM QUALITY:** 100% Made in Taiwan with reliable quality and service.
- CAM ACTION TECH:** High mechanic efficiency, provides easy and light opening.
- UNIVERSAL:** For right, left or double action doors.
- ALL SEASON FLUID:** Provide constant closing speed under a wide variety of temperatures.
- CLOSING SPEED:** Controlled by two easily adjustable independent non-critical valves. Ensure the proper closing and latching.
- POWER FORCE:** Different power models are available, suitable for different doors weight.
- MECHANICAL HOLD-OPEN:** 90° (special angle or non-hold models are available on request.)
- BODY DIMENSION:** 283 x 132 x 48mm

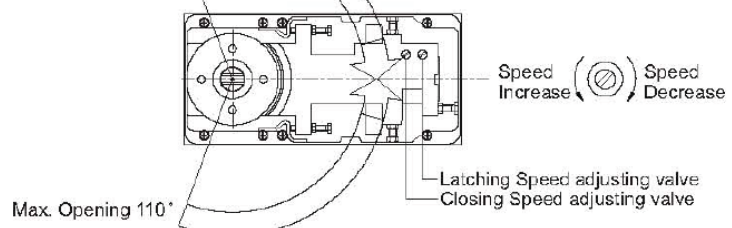


Series / Art. Number	Reference Power Size	Max. Door Weight (kgs)	Hold -open	Max. Open Angel	Back Check	Exchangeable Spindles	Off-set Arm
FS-C9802	2	80	●	110	—	—	—
FS-C9803	3	100	●	110	—	—	—

Marks: ● standard ○ available on request — not available

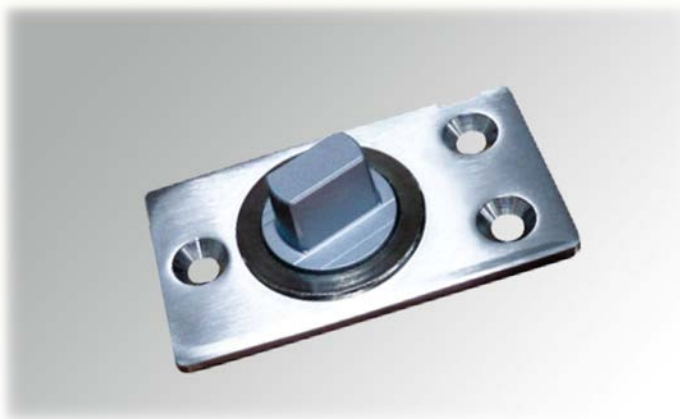


Max. Opening 110°





FLOOR SPRING



FEATURES

The **FS-T0006 Mini Pivot**,
A non-spring heavy Pivot Hinge,
designed for the door of **180 opening** and
weight up to **250kgs**.

1. **RELIABLE QUALITY:**
100% Made in Taiwan with reliable quality and service.
2. **MAXIMUM DOOR WEIGHT:**
Up to 250Kgs.
3. **MAXIMUM DOOR OPENING ANGLE:**
full 180° , suitable for single and double door.
4. **BODY DIMENSION:** 89 x 51 x 4mm

Series / Art. Number	Reference Max. Door Weight (kgs)	Max. Open Angel
FS-T0006	250	180

